



## ABOUT ARYATECH

AryaTech is fully focused, innovative on basic & detail engineering, project management services provider as well as manpower outsourcing & skill development through Training based in the financial hub of India Mumbai.

In a Short Span of time AryaTech has earned trust & the confidence of its clients with expertise in plant design. We provide services for oil & gas, refineries, process plants, petrochemicals, pharmaceuticals, power plants, pigments and other chemical industries.

AryaTech has well experienced and trained staff with a capacity of 12000 man Hrs per month. Our Team strength of "50+" technical personnel includes engineers as piping, process, mechanical, 3D/ modelers, designers, structural /civil checkers and draftsmen.

We are well conversant with Indian, ASME standards. AryaTech has most modern amenities that ensure our clients are served with utmost satisfaction. We secured the faith of our customers through efficient functioning; value added services, adherence and commitment to quality standards that has ensured clients absolute trust on us.

## OUR VISION & MISSION

To provide error free engineering services within schedule & cost effective solution. We strive to achieve our vision through,

- Deep integrity, Commitment & Ethical code of business.
- Developing leadership through result oriented culture.
- Focus on 100% client satisfaction.

## SERVICES OFFERED BY ARYATECH

- DETAIL ENGINEERING SERVICES.
- MANPOWER OUTSOURCING.
- TRAINING & SKILL ENHANCEMENT.

**ENGINEERING SERVICES**

- BASIC ENGINEERING.
- MULTI-DISCIPLINARY DETAIL ENGINEERING.
- PROCUREMENT ASSISTANCE
- DRAWINGS CONVERSION TO AUTOCAD. {MANUAL TO CAD}
- ENERGY AUDITS.
- HAZOP STUDY.
- AS BUILT SERVICES / DRAFTING SERVICES.

**PROJECT MANAGEMENT SERVICES**

- PREPARATION OF PROJECT SCHEDULE.
- PLANNING & RESOURCES ALLOCATION.
- PROJECT COST CONTROL / BUDGET CONTROL.
- QUALITY ASSURANCE INSPECTION & EXPEDITING.
- MIS REPORT.

**BASIC ENGINEERING PACKAGE**

- GENERAL DESIGN BASIS & SPECIFICATION FOR MAJOR EQUIPMENT.
- PROCESS FLOW SHEETS, HEAT & MATERIAL BALANCE.
- PRELIMINARY PFD & P&ID DEVELOPMENT.
- PRELIMINARY PLOT PLANS, EQUIPMENT LAYOUT & CIVIL INFORMATION DRAWINGS.
- ELECTRICAL LOAD LIST, INSTRUMENT LIST.

**MULTI-DISCIPLINE DETAIL ENGINEERING**

- PROCESS ENGINEERING.
- INSTRUMENTATION ENGINEERING.
- ELECTRICAL ENGINEERING
- MECHANICAL ENGINEERING.
- PIPING ENGINEERING.
- CIVIL & STRUCTURE ENGINEERING.

**PROCESS ENGINEERING**

- PREPARATION OF PROCESS FLOW DIAGRAMS (PFD), PIPING AND INSTRUMENT DIAGRAMS (P & ID), EQUIPMENT PROCESS DATA SHEET INSTRUMENT PROCESS DATA SHEETS ETC.,

- DESIGN OF PLANT HYDRAULICS & PUMPING SYSTEM.
- PROCESS DESIGN OF COLUMNS, EXCHANGER, SEPARATORS, KO DRUMS ETC.
- SAFETY VALVE & FLARE NETWORK STUDIES.
- UTILITY & SYSTEM PACKAGES
- TECHNICAL BID ANALYSIS AND VENDOR DATA REVIEW
- HAZOP & SAFETY STUDIES, COMMISSIONING & PLANT TROUBLESHOOTING.

#### INSTRUMENTATION ENGINEERING

- PREPARATION OF CONTROL PHILOSOPHY, DETAILED EXECUTION DRAWINGS.
- PREPARATION OF INTERLOCK LOGIC DIAGRAMS, INSTRUMENT INDEX
- SPECIFICATIONS OF CONTROLS SYSTEM (DCS/PLC) & FIELD INSTRUMENT.
- PREPARATION OF JUNCTION BOX TERMINATION DRAWINGS, INSTRUMENT HOOK UP DRAWING, WIRING DIAGRAMS, CABLE SCHEDULE ETC,
- PREPARATION OF CABLE TRAY / CABLE TRENCH LAYOUTS DESIGN OF PLANT.

#### ELECTRICAL ENGINEERING

- PREPARATION OF ELECTRICAL SINGLE LINE DIAGRAM.
- SELECTION OF HV/LV SWITCHGEAR, MOTOR CONTROL CENTERS.
- LAYOUT FOR SWITCHYARD / TRANSFORMER LAYOUTS, SWITCHGEAR / MCC ROOM LAYOUT,
- BATTERY ROOM LAYOUTS. CABLE TRAY / TRENCH LAYOUTS, CABLE ROUTING LAYOUTS.

#### MECHANICAL ENGINEERING

- DESIGN OF COMPLETE RANGE OF PROCESS EQUIPMENTS. (TANK, VESSEL, REACTOR)
- MECHANICAL DESIGN & DETAILED ENGINEERING USING THE INTERNATIONAL CODES & STANDARD E.G. ASME SEC. VIII DIV. 1 & 2, API 650 ETC.
- STRESS ANALYSIS, THERMAL ANALYSIS FOR EQUIPMENT LIFE EVALUATION USING FINITE ELEMENT ANALYSIS.
- PREPARATION OF TECHNICAL BID FOR THE PROJECTS.
- DEVELOPMENT OF FABRICATION DRAWINGS & NOZZLE ORIENTATION DRAWINGS.

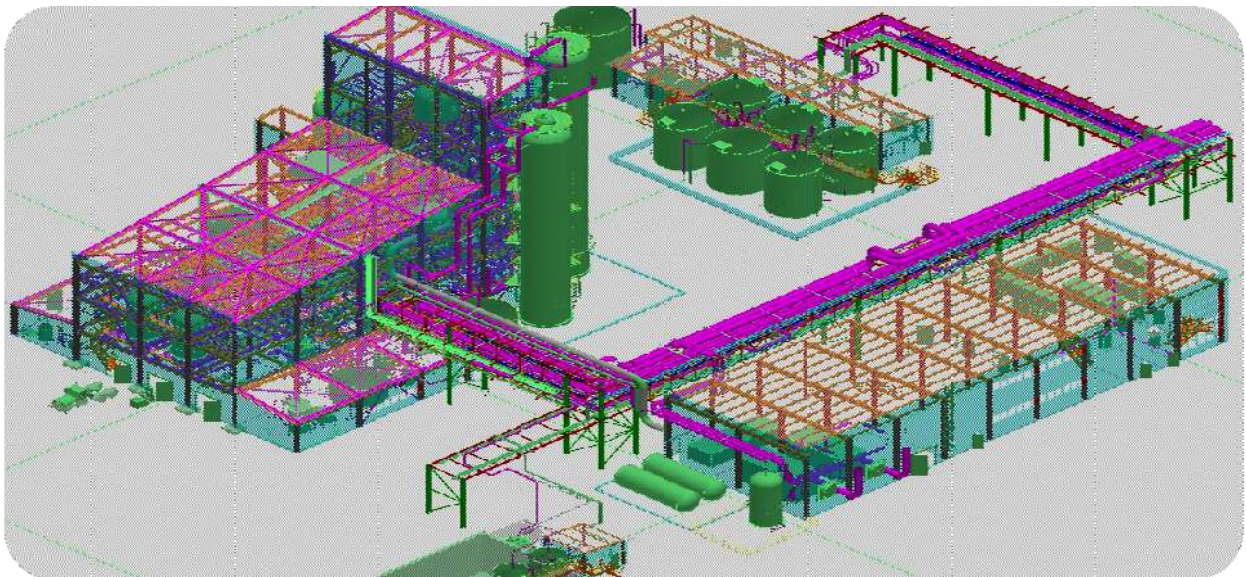
#### CIVIL & STRUCTURE ENGINEERING

- PREPARATION DETAILED FOUNDATION DRAWINGS FOR EQUIPMENTS.

- DESIGN CALCULATIONS AND PREPARATION OF DETAILED STRUCTURAL DRAWINGS, FABRICATION DRAWINGS AND BOM.
- ENGINEERING OF SKIDS AND MODULAR STRUCTURES & MTO.

#### PIPING ENGINEERING

- PLOT PLAN DEVELOPMENT & CONCEPTUAL PIPE ROUTING.
- PREPARATION OF EQUIPMENT GA AND PIPING GA
- PREPARATION OF ISOMETRICS WITH BOM/MTO
- PIPING MATERIAL SELECTION AND SPECIFICATION.
- STATIC & DYNAMIC STRESS ANALYSIS
- DESIGNING SUPPORT SPECIFICATIONS & DRAWING.
- PLANT 3-D MODELING AND CLASH DETECTION.
- EXTRACTION OF ISOMETRIC FROM 3-D MODEL WITH BOM/MTO.

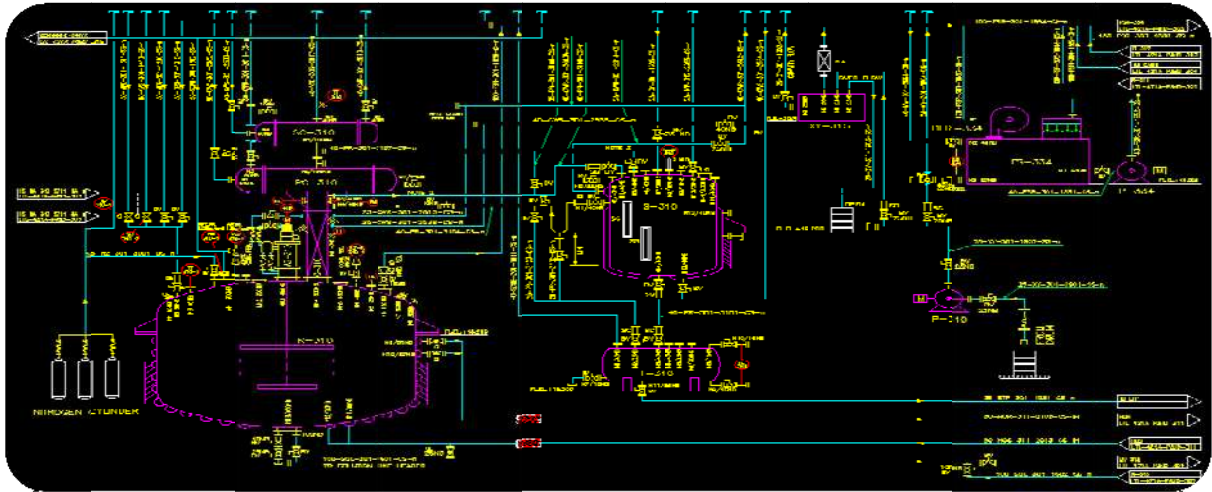


#### SP3D - MODELS

#### AS BUILT DOCUMENTATION & DRAFTING SERVICES

- PREPARATION OF ALL DOCUMENTATION REQUIRED FOR ASBUILT ENGINEERING.
- PREPARATION OF PLOT PLAN, EQUIPMENT LAYOUT, PIPING GA AS PER THE SITE MARKS -UP.
- PREPARATION OF P & ID.

- CREATE DRAWINGS FROM MARK-UPS, SKETCHES.
- CREATE NEW DRAWING AS PER SPECIFICATIONS AND STANDARDS.
- DEPUTATION OF PROFESSIONAL AUTOCAD DRAUGHTSMAN, SR. DESIGNERS FOR CARRYING OUT
- ALL SITE MARK-UP, DATA COLLECTION AND HAND SCKETCH.



### MANPOWER OUTSCORING

AryaTech Provide Skilled & Technical Manpower to various EPC, Engineering Consultancy Firms & Chemical Process Plants for speedy Execution of Project. We have a pool of Skilled & Experienced Engineers & Designers from all Disciplines for Short & long Term Deputation or for full-time Employment.

Depending on Client Requirements, we also undertake Projects at Client Location/Site. This helps clients to retain his valuable data within its premises & effectively monitor the schedule With Proper Co-ordination within Project Teams.

✓ FEATURES	✓ WORKING AREA
✓ <b>STRONG CLIENT REFERRALS</b>	✓ ENGINEERING DESIGN
✓ <b>COST SAVING</b>	✓ PROCUREMENT
✓ <b>FAST AND QUALITY MANPOWER</b>	✓ EXPEDITING
✓ <b>FLEXIBILITY IN HIRING</b>	✓ PROJECT SUPERVISION / MANAGEMENT
✓ <b>FOCUS OF CORE COMPETENCIES</b>	✓ CONSTRUCTION SUPERVISION / MANAGEMENT
✓ <b>NO PERMANENT LIABILITIES</b>	✓ INSPECTION/ SAFETY/HAZOP
✓ <b>GOVERNMENT STATUTORY COMPLIANCE</b>	✓ START-UP, PRE-COMMISSIONING & COMMISSIONING
✓ <b>LOW HEAD COUNT</b>	✓ SHUTDOWN / TURN AROUND/ OPERATIONS & MAINTENANCE

OUR SERVICES CATER TO DEPUTATION FOR FOLLOWING ACTIVITIES

- DESIGN & DETAILED ENGINEERING FOR ALL THE DISCIPLINE OF ENGINEERING.
- 2D DRAFTING. (AUTOCAD/MICRO STATION/SMART SKETCH)
- 3D DESIGNERS & MODELERS. (PDS/PDMS/CAD WORK/AUTO PLANT)
- PROJECT CO-ORDINATION/ MANAGEMENT.
- PROCUREMENT/INSPECTION/EXPEDITING.
- ERECTION / CONSTRUCTION SUPERVISION.
- COMMISSIONING ASSISTANCE.

INDUSTRIAL TRAINING

Engineering is the discipline, art and profession of acquiring and applying technical, Scientific and mathematical knowledge to design and implement materials, Structures, machines, devices, systems, and processes that safely realize a desired Objective or invention.

Our aim is to develop the competency of engineering professionals in order to meet Fast growing demand of the engineering sector in India & Worldwide.

We undertake Individual as well as corporate Training & a Skill Development of Professional for their career benefit & long term employment.

TRAINING COURSES

- CHEMICAL PROCESS DESIGN ENGINEERING. (CDPE)
- PIPING DESIGN ENGINEERING. (PDE)
- INSTRUMENT DESIGN ENGINEERING. (IDE)
- ELECTRICAL DESIGN ENGINEERING. (EDE)
- PROCESS EQUIPMENT DESIGN ENGINEERING. (PEDE)
- SOFTWARE TRAINING FOR CORPORATE AS WELL AS INDIVIDUALS.
- (PDMS/ PDS, CAESAR II, SP P& ID, SPI, SP3D, SP EL, PV ELITE/CADWORXS ETC.)

ENGINEERING SOFTWARE & TOOLS

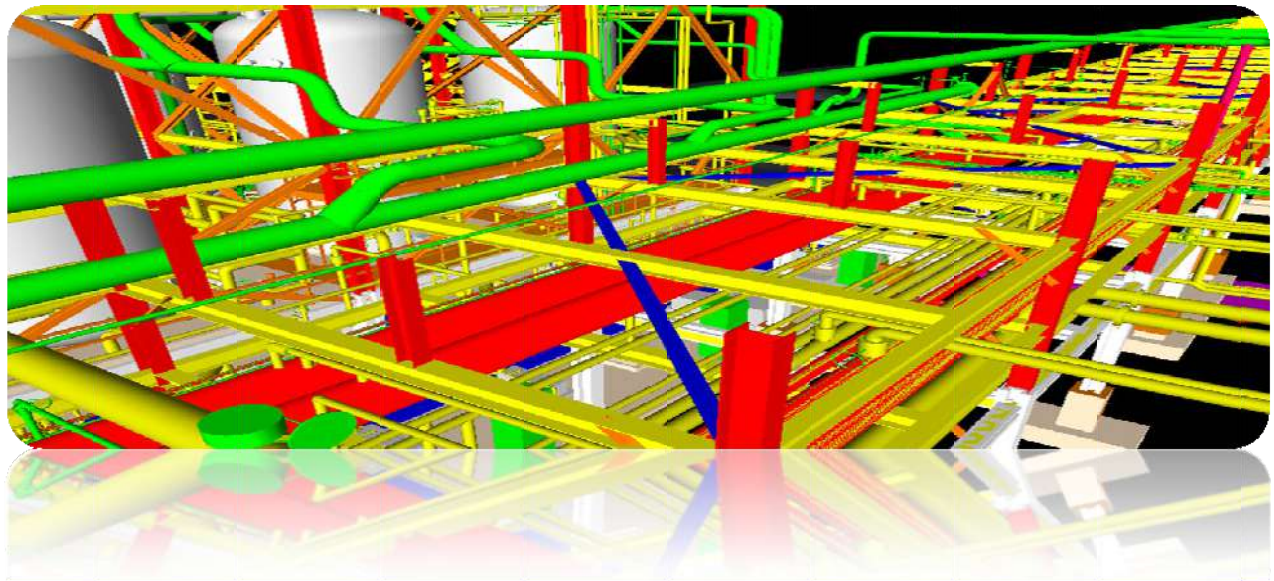
**PROCESS ENGINEERING**

**HYSYS Process Simulation  
Pipe Net Hydraulic Analysis  
Smart Plant P & ID Generation**

**MECHANICAL/PIPING  
ENGINEERING**

**PDMS/PDS Plant 3D Modeling/SP3D  
CADWORX / Isogen Piping Isometric  
Caesar II Stress Analysis/PV Elite  
Pressure Vessel Design**

<b>ELECTRICAL ENGINEERING</b> <b>SPEL Smart Plant Electrical</b> <b>ETAP Electrical System Design</b>	<b>INSTRUMENTATION ENGINEERING</b> <b>IN TOOLS Instrumentation Spec</b>
<b>CIVIL &amp; STRUCTURAL ENGINEERING.</b> <b>STADD Structural Analysis</b> <b>X-Steel Structural Detailing</b>	<b>PROJECT MANAGEMENT</b> <b>Primavera Project Planning &amp; Control</b> <b>MS Project</b>



Engineering Projects Execute successfully

SR. NO	CLIENT	PROJECT DESCRIPTION	PERIOD
1	JACOBS ENGINEERING	APL - DETAIL ENGINEERING IN PDMS (MAN-HRS 75000)	2 YEAR-(2016-17)
2	DODSAL	EWTP-DETAIL ENGINEERING IN PDMS (MAN-HRS 5000)	1 YEAR-(2016-17)
3	BARC	HEAVY WATER-DETAIL ENGINEERING IN PDMS (MAN-HRS 6000)	1 YEAR-(2016-17)
4	JACOBS ENGINEERING	RSPL CHEMICAL COMPLEX - DETAIL ENGINEERING IN PDS (MAN-HRS 55000)	2 YEAR-(2015-16)
5	BASF	FBD CONSTRUCTION PACKAGE IN PDS (MAN-HRS 7000)	6 MONTH-(2015-16)
6	IBI CHEMATUR (RUSSIA)	H2O2 - DETAIL ENGINEERING IN SP3D (MAN-HRS 25000)	1 YEAR-(2014-15)
7	ACE INDUSTRIES (IRAQ)	CALCIUM SULPHITE- DETAIL ENGINEERING IN PDMS (MAN-HRS 7500)	1 YEAR-(2014-15)
8	RISHABH ENGINEERING (UAE)	HABSHAN -DETAIL ENGINEERING IN SP3D (MAN-HRS 25000)	1 YEAR-(2014-15)

9	TOYO ENGINEERING PRIVATE LTD.	PID PREPRATION USING AUTOCAD	6Month
10	ENQUIOX	P & ID DRAFTING WORK IN AUTOCAD	1Month
11	LIBRA - HENKAL ADESIVE	AS BUILT WORK ON P & IDS & EQUIPMENT/PIPING LAYOUT	6 MONTH
12	INVENSYS	LOGIC DEVELOPMENT JOB, INTEGRATION WITH MODEL DCS & LOGIC TESTING	6 MONTH
13	NEON INFOTECH SOUTH EAST ASIA	CORPORATE TRAINING PV ELITE PRESSURE VESSEL CADWORX/PDMS/PDS PLANT 3D.CAESAR II.	1 YEAR
14	TATA CONSULTING ENGINEERING (TCE)	CORPORATE TRAINING IN TOOLS INSTRUMENTATION SMART PLANT P & ID GENERATION.	6 MONTH
15	INVENSYS	HMI DEVELOPMENT WORK	01 YEAR
16	ACE ENERGY & INFRA	DETAIL ENGINEERING	01 YEAR
17	ONGC	DRAFTING OF INSTRUMENTS & ELECTRICAL LOGIC DIAGRAM	01 YEAR
18	METSO & CTM	DRAFTING OF INSTRUMENTS & ELECTRICAL LOGIC DIAGRAM	01 YEAR
19	BLUE STAR	IBR PIPING DETAIL ENGINEERING	6 MONTH
20	TATA CONSULTING ENGINEERS	CADBURY - PREP. AS BUILT DWG	6 MONTH
21	TATA CONSULTING ENGINEERS	IGCAR PROJECT -OSBL PREPARATION OF ISOMETRIC /PIPING LAYOUT.	6 MONTH
22	MICAS ORGANIC, VAPI	REVAMPING & AS BUILT PLANT 3D MODELING IN PDMS (12 PLANTS)	1 YEAR
23	OIL INDIA LTD,ASSAM	REVAMPING & AS BUILT OF 40 GAS/OIL INSTALLATION	01 YEAR



## OUR VALUABLE CLIENTS



